

GREEN LION

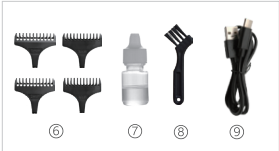
USER MANUAL



GENTLEMAN
HAIR TRIMMER

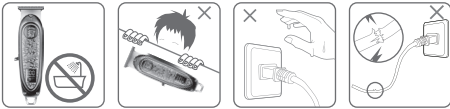
Unpacking

- 1.Balde
- 2.Switch
- 3.LED display
- 4.Charging port
- 5.Hanging hook
- 6.Guid e comb
- 7.Oil
- 8.Cleaning brush
- 9.USB cable



Precautions

Waming: ensure hair clipper keep dry



- 1.please not clean the hair clipper with water.
- 2.please ensure hair clipper is under close condition when charging.
- 3.this appliance must be charged at the specified voltage(DC 5V 1A).
- 4.Avoid fall off this product or receive intense bombardment.
- 5.please not clean the hair clipper whith the salt water ,dilutents, gasoline, alcohol or other clemicals.
- 6.People whose body is not sound, or have mental disorders and lack of relevant experience and knowledge (including children) should use hair clipper under the supervision and guildance of the guardian.
- 7.If the hair clipper is damaged, please do not use again, please handle as defective product , if necessary, sent in tomaintenance department of the company for maintebance.
- 8.please use trustingly as it is normal phenomenon that hair clipper may have a slight fever in the process of using and charging.
- 9.It can ensurente best haircut effect if cleaning the hair clipper regularly.
- 10.please ensure the hair clipper closed before cleaning.
- 11.In orde to keep best haircut, we suggest replace the clipper head every two years, and please use the Daling authentic accessories.

Start use

The appliance as supplied by the manufacturer isnot yet ready for use. it must be electricallycharged prior to use.



ON/OFF

Button switch, press the switch, the dipper can start to work, close the dipper, press the switch button again .



A variety of limit combs

According to different hair length, replace the corresponding limit comb 1/2/3/4 mm limit comb



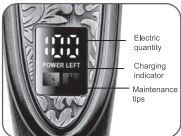
USB charging

USB charging, Charging time 2 hours, full charge can last 180 minutes
Connect the power cord to the dipper and power socket.



Cleaning and care of cutting head

Cleaning: use a cleaning brush to remove hair from the tip of the knife
Upkeep: the oil bottle dripped on the tip of the knife



LED display

Display remaining battery, low battery and maintenance reminders

Model and specification

Product	Electric hair clipper
Model	GL-TM28
Rated Power	5W
Motor	280 DC Motor
Material	ABS
Charge Port	Type-C
Charging Time	3 Hours
Working Time	3 Hours
Battery	1200mAh
RPM Range	6500 RPM
Product Weight	3 Hours
Product Dimensions	45*38*163 mm
Comb Size	1/2/3/4 mm

Issue	Reason	Solution
Haircut performance is not good	Hair clipper head is damaged , Low battery	Replace with original produced clipper head, Connect with the power for charging
Not work when opening	Battery has run out Switch lose efficacy	Connect with the power for charging, Return to the after-sales repairing
Indicators not work	Indicator light /short circuit trouble	Return to the after-sales repairing
Unable to charge	Clipper is damaged Charging cable is damage	Return to the after-sales repairing Replace the charging cable

Environmental protection

Battery contains the environmental pollution substances, please take out the battery or deliver it to the official formal collection point for disposing when throw away the hair clipper, You also can deliver in to the specified maintenance department for resolving and recycling.



Remove the battey

Cut off the power and let the hair clipperr nunl the batery runs out.
Unscrew all the screws, open the clipper, and then take out the battery.

Attention

we can take out the battery only when throw away the hair clipper

Warranty card

The product has passed the inspection of the quality control department and allowed to be sold

Please keep the warranty card and purchase invoice properly , and present the warranty card and purchase invoice when repairing.

Effective date :

Quality inspection pass seal:

Warranty Card

Username		Gender		Age	
Mailing address					
Phone				Zip code	
Purchase address					
Price			Sales order number		
Description & Specification			Body number		
Dealer signature			User signature		



Please keep the warranty card and purchase invoice as after-sales proof, This card must be provided during the warranty. If this card is not provided or the card is altered privately, the company has the right to do non-warranty treatment!